

KODAK MEMO

January 5, 1967

TO: Distribution
FROM: Pete Sucky, Systems Group
SUBJECT: Phase II Videofile Software Proposal

Enclosed is a revised edition of the Tiger Team Videofile Software, Phase II Proposal. Some corrections and additions have been made as a result of our last meeting.

I believe the general consensus at the last meeting was that while this might very well be an approach we could use in a next generation product, at this point in time, not enough is known about what the market will want to go any further with this proposal. However, this proposal should provide a good starting point for discussion when that day finally does roll around.

The enclosed list covers some of the features which were discussed as part of a next generation product. Most would have a major impact on the software as it is today.



PJS:pjs

Enc.

- c. J. Acello
- A. Arnold
- J. Bradley
- E. Brooks
- J. Compton
- E. Kendrick
- R. Lucas
- D. Podsedly
- J. Skipper

**VIDEOFILE
(IMAGE MASTER)
SOFTWARE/HARDWARE
TIGER TEAM PROPOSAL
PHASE II**

IMAGE MASTER PROPOSAL PHASE II

Optional Wireless Remote



(Identical to wired or
could be same unit)

Standard Remote



POWER SWITCH

HARD
POWER SWITCH
ON REAR OF
IMAGE MASTER?

IMAGE MASTER
PERSONALITY
MODULE

RS-422

Standard Keyboard
(Folds down)
(Detachable?)

Intended for Stand-alone use

Optional Mouse

Modules to support
'Albuming' as in
this proposal or
'Data Base', 'AV',
or other applications

LED Status Display
Indicates
Auto Playback Mode
Error Messages



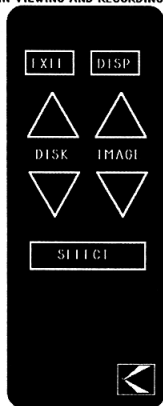
Optional Keyboard

(Only if main keyboard is not adequate)

Intended to support
RS-232 applications,
to make Image Master
a full terminal.

PROPOSED REMOTE CONTROL AND KEYBOARD CONFIGURATIONS

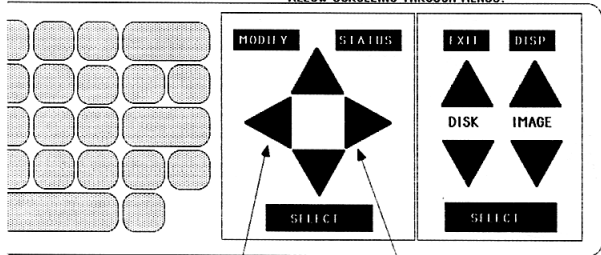
THE REMOTE IS INTENDED ONLY FOR
USE IN VIEWING AND RECORDING MODES



BOTH KEYS ARE USED FOR
SCROLLING UP AND DOWN MENU
OPTIONS WHEN MENU OPTIONS
ARE DISPLAYED. WHEN
VIEWING OR RECORDING THEY
ARE USED AS THE IMAGE OR
DISK FORWARD AND REVERSE
KEYS.

THE CURSOR HAS TWO SPEEDS
AND WILL WRAPAROUND IN
BOTH DIRECTIONS.

ALL THE UP/DOWN ARROW KEYS WILL
ALLOW SCROLLING THROUGH MENUS.



THESE KEYS ARE USED TO MOVE LEFT OR RIGHT
ON ANY MULTI-COLUMN MENUS SUCH AS SETTING
THE DATE OR WITH CATEGORY AND DISK SELECTIONS.

STARTUP



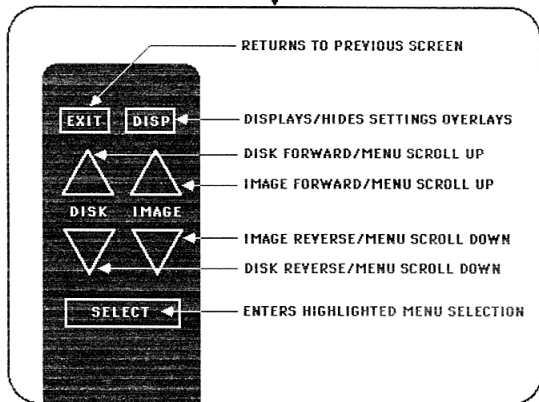
KODAK IMAGE MASTER

**Copyright © 1986
Eastman Kodak Company
Release X.1**

SCANNING TRAY

**Wait for the tray to reach
the operating position.**

DURING INITIAL TRAY SCAN
AFTER TITLE SCREEN





#30

TRAY SCAN MESSAGES

NOTE

3 DISKS HAVE BEEN ADDED TO THE TRAY SINCE THE LAST TIME IT WAS IN THE IMAGE MANAGER. YOU MIGHT WANT TO NAME THESE SLOTS.

NOTE

2 DISKS HAVE BEEN REMOVED FROM THE TRAY SINCE THE LAST TIME IT WAS IN THE IMAGE MANAGER.

CAUTION

TWO DISKS ARE MISSING THAT HAD IMAGE DATA ASSIGNED TO THEM. SELECT "CHECK TRAY STATUS" ON MAIN MENU TO RESOLVE ERROR.

PRESS SELECT TO CONTINUE

PRESSING ANY KEY ON THE REMOTE WILL ADVANCE TO THE MAIN MENU.

#1.

TITLE SCREEN



KODAK IMAGE MASTER MAIN MENU

ONLY APPEARS
IF AVAILABLE

- 0. IMAGE MASTER
PROGRAM PLAYBACK
- 1. VIEW CATEGORY
- 2. VIEW DISKS
- 3. RECORD IMAGES
- 4. REMOVE TRAY

NOTE:

IF OPTION 0 IS SELECTED AND MORE THAN ONE IMAGE MASTER PROGRAM EXISTS AN ADDITIONAL MENU WILL APPEAR WITH ALL THE AVAILABLE PROGRAMS LISTED.

#1.

PRESSING MODIFY
KEY ON KEYBOARD
DISPLAYS THESE

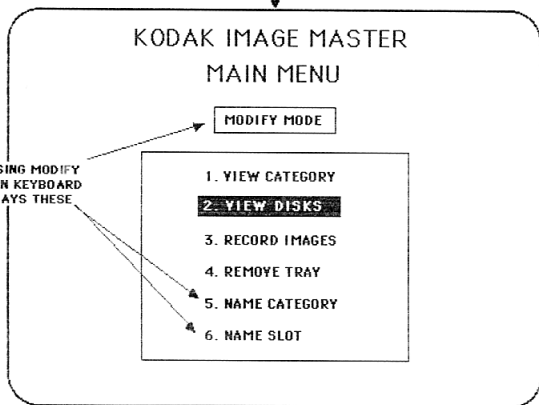
**NOTE:**

IMAGE MASTER PROGRAMS CANNOT BE MODIFIED IN THE STAND ALONE MODE. THEREFORE THAT OPTION WILL NOT APPEAR ON THIS MAIN MENU EVEN IF A PROGRAM EXISTS. (IT WILL REAPPEAR IF THE MODIFY KEY IS PRESSED AGAIN)

#3

MAIN MENU OPTION # 1

W OR W/O

MODIFY KEY



CATEGORY SELECTION

MODIFY MODE

← APPEARS IF MODIFY KEY
ON KEYBOARD IS PRESSED

CATEGORY # 4

- | | |
|-----------------|-----------------|
| 1. A-FRAMES | 11. LOG HOMES |
| 2. BUNGALOWS | 12. MOBILE HOME |
| 3. COLONIALS | 13. RANCHES |
| 4. CAPES | 14. R. RANCHES |
| 5. | 15. SOLAR HOMES |
| 6. | 16. SPLITS |
| 7. | 17. |
| 8. | 18. |
| 9. | 19. |
| 10. | 20. |

Press DISPLAY to Check View Settings

View Mode Only

SCROLLING IS DONE IN NUMERICAL ORDER WITH WRAPAROUND TO #1 AFTER #20 OR FROM #1 TO #20. THE DEFAULT HIGHLIGHTED SELECTION IS #1 ON POWER UP AND AFTER THAT WHEN RETURNING TO THIS MENU THE LAST SELECTION MADE BEFORE IS AUTOMATICALLY HIGHLIGHTED.

THE LEFT/RIGHT ARROW KEYS ON THE KEYBOARD WILL MOYE THE CURSOR FROM ONE COLUMN TO THE OTHER.

NOTE:

OPTIONS MAY BE KEYED IN USING THE ATTACHED KEYBOARD. ONE OR TWO DIGITS MAY BE ENTERED WHICH WILL SCROLL TO THE LEFT AS LONG AS KEYS CONTINUE TO BE ENTERED, ALLOWING FOR CORRECTIONS TO BE MADE, THE SCROLL BAR DISPLAYS THE CURRENT SELECTION. IF NO ENTRY IS MADE WITHIN THREE SECONDS OF THE LAST KEY STROKE THE SELECTION IS AUTOMATICALLY ENTERED. PRESSING SELECT ENTERS THE SELECTION IMMEDIATELY.

MAIN MENU OPTION # 2
W OR W/O
MODIFY KEY

4

DISK SELECTION

SLOT # **10** **MODIFY MODE** ← APPEARS IF MODIFY KEY
ON KEYBOARD IS PRESSED

1. AYON	16. WEBSTER-1
2. BRIGHTON	17. WEBSTER-2
3. CHILI	
4. CHRCHYIL	
5. EAST ROCH	20. MISC
6. FAIRPORT	21. MISC
7. GREECE	22.
8. HENRIETTA	23.
9. HILTON	24.
10. HONEYOE	
11. IROND.	
12. MENDON	27.
13. PENFIELD	28.
14. ROCHESTER	29.
15. VICTOR	30.

Press DISPLAY to Check View Settings

View Mode Only

SCROLLING IS DONE IN NUMERICAL ORDER WITH WRAPAROUND TO #1 AFTER #30 OR FROM #1 TO #30. THE DEFAULT HIGHLIGHTED SELECTION IS #1 ON POWER UP AND AFTER THAT WHEN RETURNING TO THIS MENU THE LAST SELECTION MADE BEFORE IS AUTOMATICALLY HIGHLIGHTED.

THE LEFT/RIGHT ARROW KEYS ON THE KEYBOARD WILL MOVE THE CURSOR FROM ONE COLUMN TO THE OTHER.

NOTE:

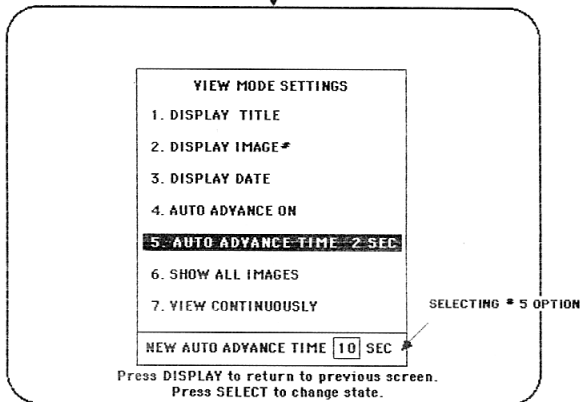
IF DISK IS NOT IN TRAY, SLOT NUMBER IS NOT DISPLAYED.

NOTE:

OPTIONS MAY BE KEYED IN USING THE ATTACHED KEYBOARD. ONE OR TWO DIGITS MAY BE ENTERED WHICH WILL SCROLL TO THE LEFT AS LONG AS KEYS CONTINUE TO BE ENTERED, ALLOWING FOR CORRECTIONS TO BE MADE, THE SCROLL BAR DISPLAYS THE CURRENT SELECTION. IF NO ENTRY IS MADE WITHIN THREE SECONDS OF THE LAST KEY STROKE THE SELECTION IS AUTOMATICALLY ENTERED. PRESSING SELECT ENTERS THE SELECTION IMMEDIATELY.

DISPLAY BUTTON FROM
VIEW CATEGORY OR VIEW DISK
OR THE SELECTION MENUS

#5



SHOWN IN FACTORY DEFAULT SETTINGS

#5. POP UP WINDOW APPEARS TO ALLOW USER TO ENTER NEW TIME. USING THE UP AND DOWN ARROW KEYS THE USER CAN SCROLL FROM 1 TO 99 SECONDS, PRESSING SELECT ENTERS THE NEW TIME.

ALTERNATE TOGGLED SETTINGS

1. HIDE TITLE
2. HIDE IMAGE #
3. HIDE DATE
4. AUTO ADVANCE OFF
6. SKIP DESIGNATED IMAGES
7. VIEW ONCE

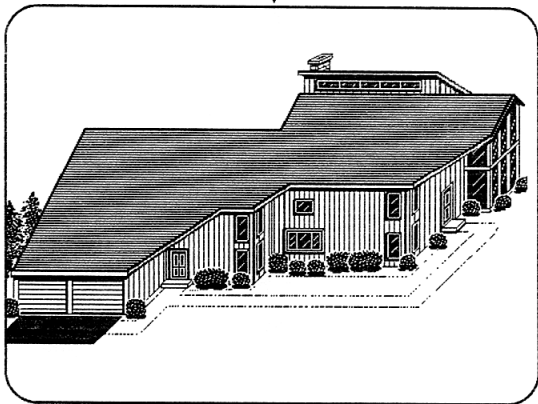
NOTE: THIS DISPLAY IS NOT AVAILABLE IF THE MODIFY KEY HAS BEEN SELECTED FROM THE KEYBOARD.

HIT DISPLAY KEY TO TOGGLE
SETTINGS OVERLAYS ON/OFF

CATEGORY SELECTION MENU
OR
DISK SELECTION MENU



6

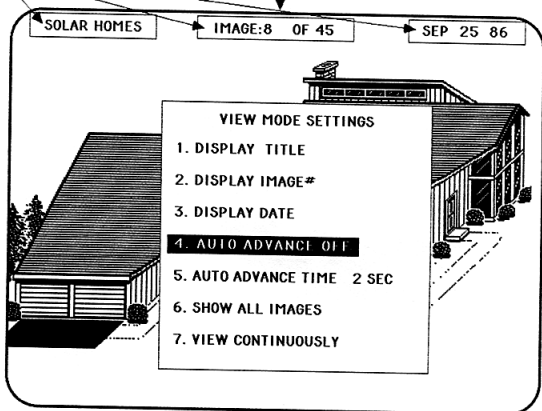


SHOWN WITHOUT TITLE, IMAGE #, OR DATE DISPLAYED. THESE
CAN BE DISPLAYED IN ANY COMBINATION IN THIS MODE. THEY
CAN BE TOGGLED ON/OFF USING THE PLAYBACK SETTINGS OVER-
LAY WHICH IS ACCESSED USING THE DISPLAY KEY.

THESE 3 ITEMS ARE
DISPLAYED AS SELECTED
BY VIEW SETTINGS 1,2,3.
NOT AFFECTED BY DISPLAY
KEY.

VIEWS CATEGORY
AND PRESSING
DISPLAY KEY

7A



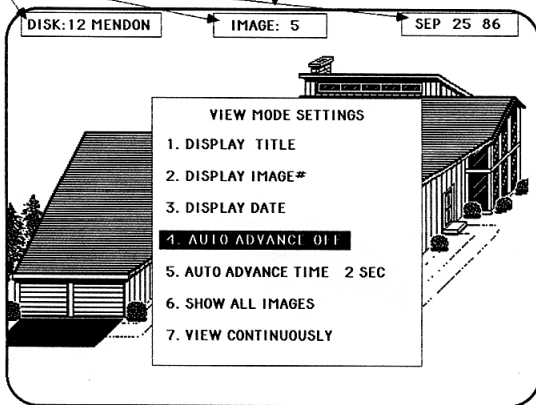
DISPLAY KEY SHOWS/HIDES VIEW SETTING OVERLAY. SETTINGS MAY ONLY BE CHANGED WITH DISPLAY SHOWN.

- 3. IF NO DATE IS ENTERED NOTHING IS SHOWN.
- 5. AUTO ADVANCE TIME IS 5 SEC FROM FACTORY (DEFAULT).
POP UP WINDOW APPEARS TO ALLOW USER TO ENTER NEW TIME.

THESE 3 ITEMS ARE
DISPLAYED AS SELECTED
BY VIEW SETTINGS 1,2,3.
NOT AFFECTED BY DISPLAY
KEY.

VIEWING DISKS
AND PRESSING
DISPLAY KEY

7B

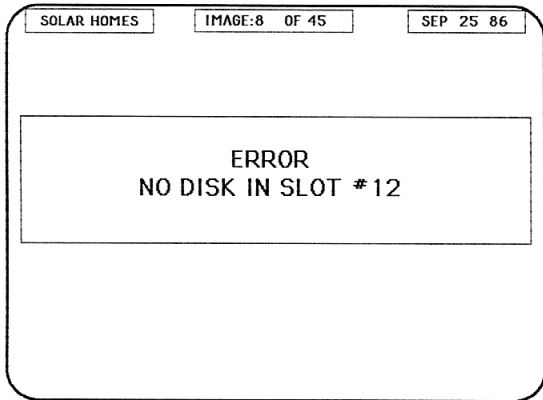


DISPLAY KEY SHOWS/HIDES VIEW SETTING OVERLAY. SETTINGS MAY ONLY BE CHANGED WITH DISPLAY SHOWN.

- 3. IF NO DATE IS ENTERED NOTHING IS SHOWN.
- 5. AUTO ADVANCE TIME IS 5 SEC FROM FACTORY (DEFAULT).
POP UP WINDOW APPEARS TO ALLOW USER TO ENTER NEW TIME.

#7C

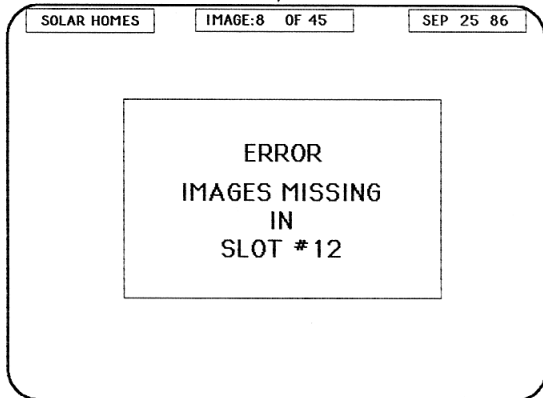
VIEW CATEGORY
DISK MISSING



IN VIEW MODE BY CATEGORY WHEN IMAGE IN CATEGORY CANNOT BE
DISPLAYED BECAUSE THE DISK IS MISSING THE ABOVE MESSAGE SCREEN
WILL APPEAR FOR 5 SECONDS AND THEN CONTINUE TO THE NEXT DISK.
DISK < > , IMAGE < > , MENU, OR EXIT WILL FUNCTION BEFORE TIME OUT.

#7D

VIEW IMAGES BY CATEGORY



IMAGES ON THE DISK THAT CAN BE SHOWN WILL BE DISPLAYED. HOWEVER, THE ABOVE MESSAGE WILL BE DISPLAYED FOR 3 SEC. WHEN THE ERROR IS DETECTED. (MESSAGE WILL BE DISPLAYED FOR AT LEAST 3 SEC. REGARDLESS OF AUTO TIMER SETTING. DISK <> OR IMAGE <>, EXIT AND MENU WILL TERMINATE MESSAGE DISPLAY AND EXECUTE COMMAND.)

NOTE: THIS CONDITION IS IGNORED IN VIEW DISK MODE

PRESSING AND HOLDING IMAGE < OR >
OR DISK < OR > IN
CATEGORY VIEWING, OR CATEGORY MODIFY



CATEGORY
IMAGE NUMBER
25

IF WHEN VIEWING OR MODIFYING BY CATEGORY THE IMAGE < > KEY OR DISK < > KEY IS PRESSED AND HELD FOR 2 SECONDS THE SCREEN WILL BLANK AND THE WINDOW ABOVE WILL APPEAR. THE NUMBERS WILL START TO SCROLL AND WRAPAROUND IN THE DIRECTION CHOSEN UNTIL THE KEY IS RELEASED. THREE SECONDS WILL BE ALLOWED FOR THE USER TO FINE TUNE THE SELECTION BEFORE THE UNIT ACCESSES THE SELECTED TRACK. PRESSING SELECT IMMEDIATELY ENTERS THE NUMBER.

WHEN USING THE DISK < > KEYS THE NUMBER WILL ADVANCE TO THE FIRST CATEGORY IMAGE ON THE NEXT DISK, IF THERE IS NO CATEGORY IMAGE ON A DISK THE DISK IS SKIPPED.

IF AN IMAGE IS SELECTED THAT IS NOT AVAILABLE(DISK MISSING?), THE USER IS RETURNED TO ORIGINAL IMAGE AND A MESSAGE (EITHER 7C OR 7D) IS DISPLAYED INFORMING THE USER THAT THE IMAGE IS NOT PRESENT.

PRESSING AND HOLDING IMAGE < OR >
IN
DISK VIEWING AND DISK MODIFYING



DISK:12 MENDON

IMAGE NUMBER

25

IF WHEN VIEWING OR MODIFYING BY DISK THE IMAGE < OR > KEYS ARE PRESSED AND HELD FOR 2 SECONDS THE SCREEN WILL BLANK AND THE WINDOW ABOVE WILL APPEAR. THE NUMBERS WILL START TO SCROLL AND WRAPAROUND IN THE DIRECTION CHOSEN UNTIL THE KEY IS RELEASED. THREE SECONDS WILL BE ALLOWED FOR THE USER TO FINE TUNE THE SELECTION BEFORE THE UNIT ACCESSES THE SELECTED TRACK. PRESSING SELECT IMMEDIATELY ENTERS THE NUMBER.

IF AN IMAGE NUMBER IS SELECTED FOR WHICH THERE IS NO IMAGE, THE MONITOR WILL DISPLAY THE PREVIOUS IMAGE AND A MESSAGE OVERLAY WILL APPEAR INDICATING THAT THERE IS NO IMAGE RECORDED ON THAT DISK WITH THAT NUMBER.

PRESSING AND HOLDING DISK < OR >
IN
DISK VIEWING, DISK MODIFY OR RECORD



DISK NUMBER

05

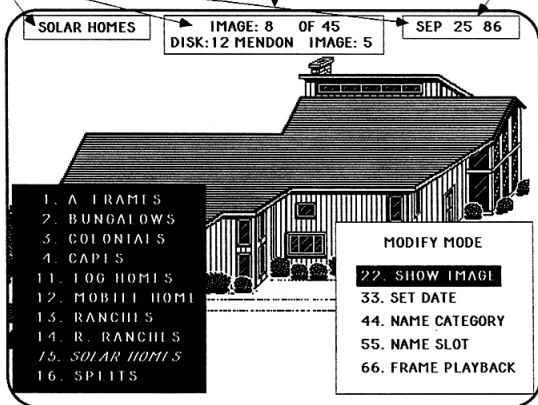
IF WHEN VIEWING, MODIFYING OR RECORDING BY DISK THE DISK < OR > KEYS ARE PRESSED AND HELD FOR 2 SECONDS THE SCREEN WILL BLANK AND THE WINDOW ABOVE WILL APPEAR. THE NUMBERS WILL START TO SCROLL AND WRAPAROUND IN THE DIRECTION CHOSEN UNTIL THE KEY IS RELEASED. THREE SECONDS WILL BE ALLOWED FOR THE USER TO FINE TUNE THE SELECTION BEFORE THE UNIT ACCESSES THE SELECTED DISK. PRESSING SELECT IMMEDIATELY ENTERS THE NUMBER. SINCE THIS FEATURE ACCESSES ONLY THE DISKS AVAILABLE IN THE TRAY, ERRORS DUE TO MISSING IMAGES OR DISKS CANNOT OCCUR.

DISPLAY WITH DISPLAY ON
REMOVE WITH DISPLAY OFF.
NOT AFFECTED BY VIEW
SETTINGS.

PRESSING MODIFY KEY
AND CHOOSING VIEW
CATEGORY SELECTION
(MAIN MENU #1)

SAYS "NO DATE"
IF NO DATE HAS
BEEN ENTERED.

9A



DISPLAY KEY SHOWS/HIDES IMAGE DATA OVERLAY.

- 22. TOGGLES BETWEEN SKIP IMAGE (YELLOW) AND SHOW IMAGE (BLUE).
- 33. BRINGS UP SET DATE SCREEN ALLOWING YOU TO SET MONTH, DAY AND YEAR OR CHOOSE 0 FOR NO DATE.
- 44. CALLS UP THE NAME/RENAME CATEGORY MENU.
- 55. CALLS UP THE NAME/RENAME DISK MENU.
- 66. ONLY SHOWS UP WITH FRAME IMAGES, ALLOWS USER TO TOGGLE BETWEEN FIELD AND FRAME PLAYBACK.

USING THE UP AND DOWN ARROW KEYS ON THE KEYBOARD THE HIGHLIGHTED AREA SCROLLS UP OR DOWN THE CATEGORY OR MODIFY OPTIONS (CATEGORY NUMBERS (1-20) OR MODIFY OPTIONS (22,33,44,55 OR 66)) AND PRESSING SELECT TOGGLES THE CATEGORY IN/OUT OR THE MODIFY OPTIONS ON/OFF. WHEN SELECT IS PRESSED AGAIN THE CURRENT IMAGE IS TOGGLED IN/OUT OF THE CATEGORY* OR THE MODIFY SETTINGS ARE TOGGLED ON/OFF DEPENDING ON THE HIGHLIGHTED POSITION. THIS ALSO APPLIES TO MODIFYING DURING RECORDING. *(INDICATED BY GREEN FOR NOT IN CATEGORY AND YELLOW FOR IN CATEGORY).

NOTE: VIEW SETTINGS DO NOT APPLY IN MODIFY

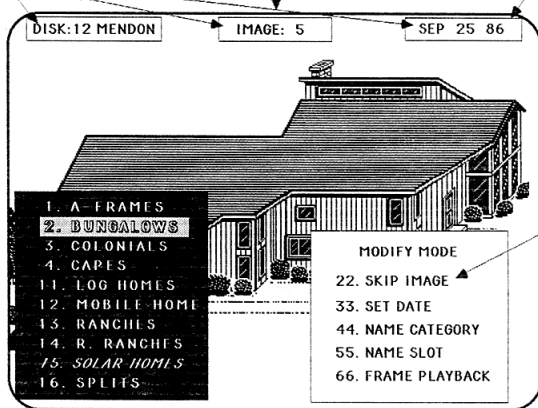
- TITLE, IMAGE NUMBERS, AND DATE ARE DISPLAYED.
- SHOW ALL IMAGES
- AUTO TIMER OFF
- WRAP AROUND IN CATEGORY OR DISK MODE.

DISPLAY WITH DISPLAY ON
REMOVE WITH DISPLAY OFF.
NOT AFFECTED BY VIEW
SETTINGS.

PRESSING MODIFY KEY
AND CHOOSING VIEW
DISK SELECTION
(MAIN MENU #1)

SAYS "NO DATE"
IF NO DATE HAS
BEEN ENTERED.

9B



DISPLAY KEY SHOWS/HIDES IMAGE DATA OVERLAY.

- 22. TOGGLES BETWEEN SKIP IMAGE (YELLOW) AND SHOW IMAGE (BLUE).
- 33. BRINGS UP SET DATE SCREEN ALLOWING YOU TO SET MONTH, DAY AND YEAR OR CHOOSE 0 FOR NO DATE.
- 44. CALLS UP THE NAME/RENAME CATEGORY MENU.
- 55. CALLS UP THE NAME/RENAME DISK MENU.
- 66. ONLY SHOWS UP WITH FRAME IMAGES, ALLOWS USER TO TOGGLE BETWEEN FIELD AND FRAME PLAYBACK.

USING THE UP AND DOWN ARROW KEYS ON THE KEYBOARD THE HIGHLIGHTED AREA SCROLLS UP OR DOWN THE CATEGORY OR MODIFY OPTIONS (CATEGORY NUMBERS (1-20) OR MODIFY OPTIONS (22,33,44,55 OR 66)) AND PRESSING SELECT TOGGLES THE CATEGORY IN/OUT OR THE MODIFY OPTIONS ON/OFF. WHEN SELECT IS PRESSED AGAIN THE CURRENT IMAGE IS TOGGLED IN/OUT OF THE CATEGORY* OR THE MODIFY SETTINGS ARE TOGGLED ON/OFF DEPENDING ON THE HIGHLIGHTED POSITION. THIS ALSO APPLIES TO MODIFYING DURING RECORDING. *(INDICATED BY GREEN FOR NOT IN CATEGORY AND YELLOW FOR IN CATEGORY).

NOTE: VIEW SETTINGS DO NOT APPLY IN MODIFY

- TITLE, IMAGE NUMBERS, AND DATE ARE DISPLAYED
- SHOW ALL IMAGES
- AUTO TIMER OFF
- WRAP AROUND IN CATEGORY OR DISK MODE.

MODIFY BY CATEGORY

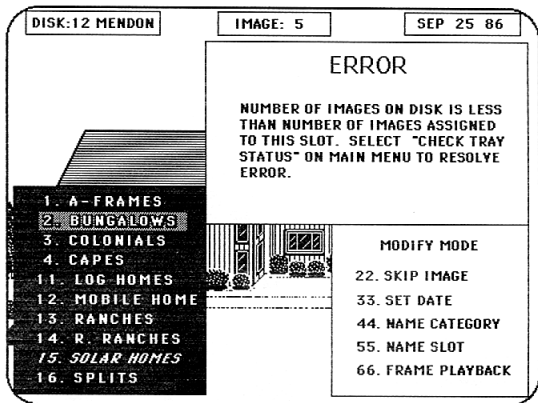
9C

SOLAR HOMES		IMAGE: 8 OF 45 DISK: 12 MENDON IMAGE: 5		SEP 25 86	
1. A TRAMIS 2. BUNGALOWS 3. COLONIALS 4. CAPIS 11. LOG HOMES 12. MOBILE HOME 13. RANCHES 14. R. RANCHES 15. SOLAR HOMES 16. SPLITS		ERROR IMAGE 8 MISSING NO DISK IN SLOT #12 SELECT "CHECK TRAY STATUS" ON MAIN MENU TO RESOLVE ERROR.			
		MODIFY MODE <div style="border: 1px solid black; padding: 2px; display: inline-block;">22. SHOW IMAGE</div> 33. SET DATE 44. NAME CATEGORY 55. NAME SLOT 66. FRAME PLAYBACK			

IN MODIFY MODE BY CATEGORY WHEN IMAGE IN CATEGORY CANNOT BE DISPLAYED BECAUSE THE DISK IS MISSING THE ABOVE MESSAGE SCREEN WILL APPEAR. DISK < > , IMAGE < > , MENU, OR EXIT WILL FUNCTION.

ARROW CURSOR DEFAULTS TO LAST SELECTED CATEGORY OR IF FIRST IMAGE TO THE CATEGORY BEING VIEWED.

#9D



ABOVE MESSAGE WILL BE DISPLAYED OVER THE FIRST IMAGE ON THE DISK WHEN DETECTED. DISK < >, IMAGE < >, EXIT OR MENU WILL FUNCTION REMAINDER OF IMAGES ON DISK THAT CAN BE SHOWN, WILL BE DISPLAYED WITHOUT THIS MESSAGE.

#9E

SOLAR HOMES		IMAGE: 8 OF 45 DISK: 12 MENDON IMAGE: 5	SEP 25 86
1. A FRAMES 2. BUNGALOWS 3. COLONIALS 4. CAPES 11. LOG HOMES 12. MOBILE HOME 13. RANCHES 14. R. RANCHES 15. SOLAR HOMES 16. SPLITS		IMAGES MISSING IN SLOT #12 SELECT "CHECK TRAY STATUS" ON MAIN MENU TO RESOLVE ERROR	
		MODIFY MODE 22. SHOW IMAGE 33. SET DATE 44. NAME CATEGORY 55. NAME SLOT 66. FRAME PLAYBACK	

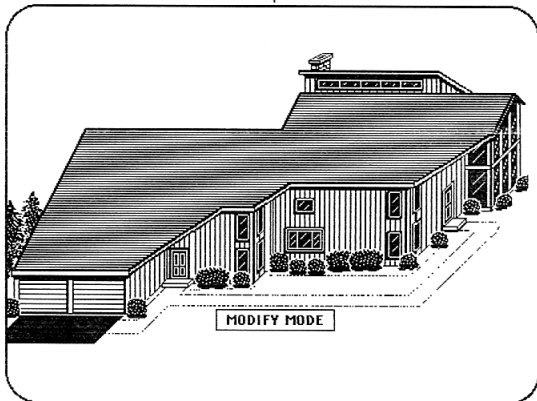
ABOVE MESSAGE WILL BE DISPLAYED OVER THE FIRST IMAGE ON THE DISK WHEN DETECTED. DISK < >, IMAGE < >, EXIT OR MENU WILL FUNCTION REMAINDER OF IMAGES ON DISK THAT CAN BE SHOWN, WILL BE DISPLAYED WITHOUT THIS MESSAGE.

CATEGORY OR DISK SELECTION
MENUS W/MODIFY KEY
AND DISPLAY KEY



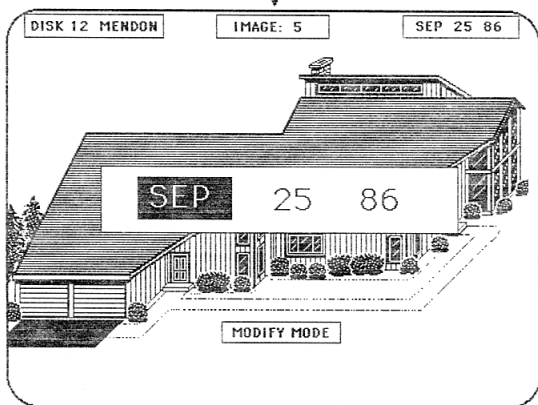
HIT DISPLAY KEY TO TOGGLE
SETTINGS OVERLAYS ON/OFF

10



PRESSING 33
FROM 9A, 9B, & 23

12



RIGHT AND LEFT ARROW KEYS ALLOW USER TO SELECT EITHER MONTH, DAY OR YEAR TO CHANGE. UP AND DOWN ARROW KEYS SCROLL THROUGH MONTHS (JAN-DEC + BLANK), DAYS (1 - 31 + BLANK) OR YEARS (00 - 99 + BLANK) WITH LEADING ZEROS. PRESSING SELECT ENTERS DATE FOR IMAGE SHOWN. IF VALID DATE WAS PREVIOUSLY ENTERED DURING THIS "ON" SESSION THAT DATE WILL APPEAR AS THE DEFAULT DATE. KEYBOARD ENTRY OF THE MONTH, DAY OR YEAR IS ALSO SUPPORTED.

DATE IN UPPER RIGHT REMAINS AS BEFORE, UNTIL YEAR ENTRY IS MADE OR EXIT KEY IS PRESSED.

DISPLAY TIMES OUT AFTER 5 SEC IF NO SELECTION IS MADE. NO TIME OUT AFTER A KEY IS PRESSED

15

NAME CATEGORY

Select the Category you want to name/rename.

CATEGORY 1

- | | |
|--------------|-----------------|
| 1. A FRAMIS | 11. LOG HOMES |
| 2. BUNGALOWS | 12. MOBILE HOME |
| 3. COLONIALS | 13. RANCHES |
| 4. CAPEs | 14. R. RANCHES |
| 5. | 15. SOLAR HOMES |
| 6. | 16. SPLITS |
| 7. | 17. |
| 8. | 18. |
| 9. | 19. |
| 10. | 20. |

SELECT
OR
EXIT

CATEGORY SELECTED

16

NAME CATEGORY

Type in name and press SELECT.

NAME -----

- | | |
|--------------|-----------------|
| 1. A-FRAMES | 11. LOG HOMES |
| 2. BUNGALOWS | 12. MOBILE HOME |
| 3. COLONIALS | 13. RANCHES |
| 4. CAPEs | 14. R. RANCHES |
| 5. | 15. SOLAR HOMES |
| 6. | 16. SPLITS |
| 7. | 17. |
| 8. | 18. |
| 9. | 19. |
| 10. | 20. |

NOTE: IF NO NAME IS ENTERED
CAUTION MESSAGE APPEARS - 16A

NOTE: DUPLICATE NAMES NOT ALLOWED
A MESSAGE WILL APPEAR IF A
DUPLICATE NAME IS ENTERED.

ALL CHARACTERS ARE ALLOWED.

PRESSING SELECT WITHOUT
ENTERING A NEW NAME



16A

NAME CATEGORY

Type in name and press SELECT.

NAME -----

CAUTION

You Have Not Entered A Name.

Pressing SELECT
Will Erase The Category Selected.

Press EXIT to Return to Previous Screen

9.	19.
10.	20.

MESSAGE HAS TIMED PAUSE AFTER FIRST SELECT DURING WHICH IT IGNORES
ANY OTHER KEY PRESSES UNTIL MESSAGE HAS BEEN DISPLAYED FOR 3 SEC.

MAIN MENU #6
OR 55 FROM 9A.9B. OR 23

17

NAME SLOT

Select the slot you want to name/rename.

SLOT # 2

- | | |
|--------------------|---------------|
| 1. AYON | 16. WEBSTER-1 |
| 2. BRIGHTON | 17. WEBSTER-2 |
| 3. CHILI | 18. |
| 4. CHRCHYIL | 19. |
| 5. EAST ROCH | 20. MISC |
| 6. FAIRPORT | 21. MISC |
| 7. GREECE | 22. |
| 8. HENRIETTA | 23. |
| 9. HILTON | 24. |
| 10. HONEYOE | 25. |
| 11. IROND. | 26. |
| 12. MENDON | 27. |
| 13. PENFIELD | 28. |
| 14. ROCHESTER | 29. |
| 15. VICTOR | 30. |

NOTE:
IF DISKS ARE
MISSING FROM
TRAY THE SLOT
NUMBER IS
HIGHLIGHTED IN
DIFFERENT COLOR

SELECT
or
EXIT

18

SLOT SELECTED

NAME SLOT

Type in name and press SELECT.

NAME _ _ _ _ _

- | | |
|--------------------|---------------|
| 1. AYON | 16. WEBSTER-1 |
| 2. BRIGHTON | 17. WEBSTER-2 |
| 3. CHILI | 18. |
| 4. CHRCHYIL | 19. |
| 5. EAST ROCH | 20. MISC |
| 6. FAIRPORT | 21. MISC |
| 7. GREECE | 22. |
| 8. HENRIETTA | 23. |
| 9. HILTON | 24. |
| 10. HONEYOE | 25. |
| 11. IROND. | 26. |
| 12. MENDON | 27. |
| 13. PENFIELD | 28. |
| 14. ROCHESTER | 29. |
| 15. VICTOR | 30. |

NOTE: CAN NAME
ANY SLOT.
DUPLICATE NAMES
ALLOWED. ALL
CHARACTERS ARE
ALLOWED.

MAIN MENU #3



20

DISK RECORD SELECTION

SELECT DISK #

Enter 00 to record on next available track

1. AYON	(31)	16. WEBSTER	(45)
2. BRIGHTON	(23)	17.	(13)
3. CHILI	(12)	18.	?
4. CHRCHVIL	(42)	19.	?
5. EAST ROCH	?	20.	?
6. FAIRPORT	(33)		
7. GREECE	(11)	22.	?
8. HENRIETTA	(39)	23.	?
9. HILTON	?	24.	?
10. HONEYOE	(44)	25.	?
11. IROND.	(14)		
12. MENDON	(23)		
13. PENFIELD	(19)		
14. ROCHESTER	?		
15. VICTOR	(46)		

(#) = TRACKS AVAILABLE

NUMBER IS NOT DISPLAYED IF DISK IS MISSING FROM TRAY.

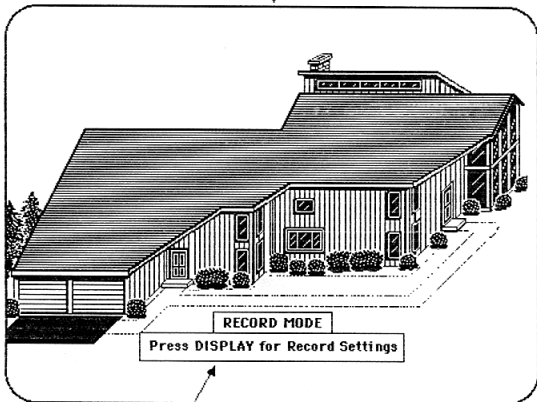
TRACKS REMAINING NUMBER DISPLAYED IN DIFFERENT COLOR TEXT.

HIT DISPLAY KEY TO TOGGLE
SETTINGS OVERLAYS ON/OFF

DISK SELECTION MENU
OR DISPLAY KEY
FROM SCREENS 22 OR 23

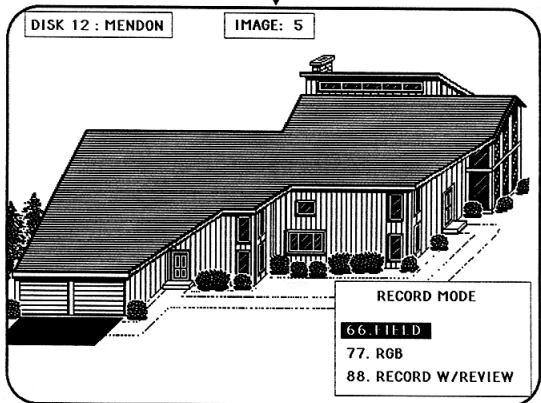


21



WHEN ENTERING THIS MODE THIS SCREEN COMES UP WITHOUT SETTINGS
OVERLAY AND A MESSAGE IS DISPLAYED FOR 5 SECONDS STATING THE
ABOVE. ALSO DISPLAYED FOR 5 SEC AFTER DISPLAY KEY IS TOGGLED
TO REMOYE DISPLAY.

PRESSING DISPLAY KEY
FROM SCREEN 21
OR
PRESSING MODIFY KEY
FROM SCREEN 23



RGB/NTSC INDICATOR/SELECTOR AVAILABLE ON SCREEN DEFAULTS TO WHICHEVER SOURCE IS AVAILABLE, IF BOTH ARE AVAILABLE IT DEFAULTS TO RGB

CAN SELECT NEXT AVAILABLE DISK FOR RECORDING USING THE DISK < > KEYS OR BY USING EXIT TO RETURN TO "DISK SELECTION" MENU.

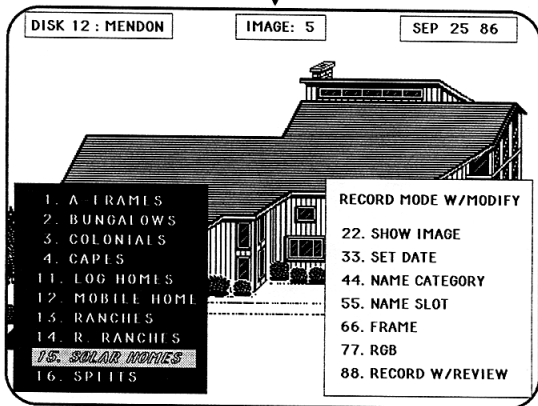
WITH NO REVIEW SELECTED VIDEO WILL BE BLANKED 1/8 TO 1/4 SEC, WHEN A RECORDING IS MADE AND THE IMAGE: 5 DISPLAY WILL INCREMENT TO IMAGE: 6.

IF RECORD REVIEW IS SELECTED, THEN SCREEN WILL BLANK FOR WHEN A RECORDING IS MADE AND THE IMAGE JUST RECORDED WILL BE PLAYED BACK AS SOON AS POSSIBLE, IT WILL BE DISPLAYED FOR 5 SEC. WITH A BANNER "RECORD REVIEW". THE SCREEN WILL BLANK FOR 1/8 TO 1/4 SEC. AND RETURN TO RECORD MODE.

- 66. FIELD/FRAME RECORD TOGGLE
- 77. RGB/NTSC INPUT TOGGLE
- 88. RECORD REVIEW/NO REVIEW TOGGLE

PRESSING MODIFY KEY
FROM #22 SCREEN

23



RGB/NTSC INDICATOR/SELECTOR AVAILABLE ON SCREEN DEFAULTS TO WHICHEVER SOURCE IS AVAILABLE, IF BOTH ARE AVAILABLE IT DEFAULTS TO RGB

CAN SELECT FIRST AVAILABLE DISK FOR RECORDING USING THE DISK < > KEYS OR BY USING EXIT TO RETURN TO "DISK SELECTION" MENU.

WITH RECORD W/O REVIEW SELECTED VIDEO WILL BE BLANKED 1/8 TO 1/4 SEC, WHEN A RECORDING IS MADE AND THE IMAGE: 5 DISPLAY WILL INCREMENT TO IMAGE: 6.

IF PLAYBACK REVIEW IS SELECTED, THEN SCREEN WILL BLANK FOR WHEN A RECORDING IS MADE AND THE IMAGE JUST RECORDED WILL BE PLAYED BACK AS SOON AS POSSIBLE, IT WILL BE DISPLAYED FOR 5 SEC. WITH A BANNER "PLAYBACK REVIEW". THE SCREEN WILL BLANK FOR 1/8 TO 1/4 SEC. AND RETURN TO RECORD MODE.

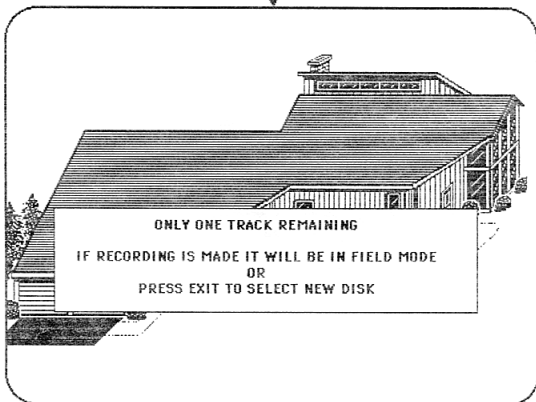
22. SHOW IMAGE/SKIP IMAGE TOGGLE
33. SET DATE (SCREEN 12)
44. NAME CATEGORY (SCREENS 15,16)
55. NAME SLOT (SCREENS 17,18)

66. FIELD/FRAME RECORD TOGGLE
77. RGB/NTSC INPUT TOGGLE
88. RECORD REVIEW/NO REVIEW TOGGLE

ONE TRACK LEFT
ON DISK AND
RECORDING IN
FRAME MODE



24

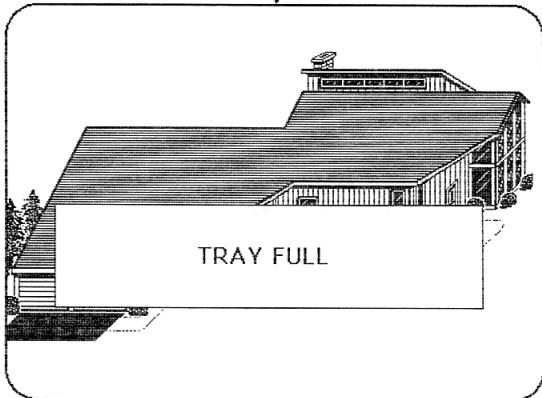


PRESSING EXIT FOR ABOVE MESSAGE WILL GO TO DISK SELECTION MENU UNLESS 00 HAD BEEN SELECTED IN WHICH CASE NEXT AVAILABLE TRACK ON NEXT DISK IS SELECTED. RECORD WILL RECORD A FIELD.

AFTER LAST AVAILABLE
TRACK ON LAST DISK
IN TRAY HAS BEEN
RECORDED



24A




IF TRAY IS FULL THE OVERLAY "TRAY FULL" APPEARS FOR 5 SEC
AND THEN RETURNS TO MAIN MENU SO TRAY MAY BE REMOVED IF
DESIRED.

DISK 12 : MENDON		IMAGE: 5	SEP 25 86
------------------	--	----------	-----------

CAUTION

THIS SLOT ALREADY HAS IMAGE DATA.
DO YOU WISH TO CHANGE THIS DATA?

YES..... PRESS SELECT
NO..... PRESS EXIT

<ul style="list-style-type: none"> 1. A-FRAMES 2. BUNGALOWS 3. COLONIALS 4. CAPES 11. LOG HOMES 12. MOBILE HOME 13. RANCHES 14. R. RANCHES 15. SOLAR HOMES 16. SPLITS 		<p>RECORD MODE W/MODIFY</p> <ul style="list-style-type: none"> 22. SHOW IMAGE 33. SET DATE 44. NAME CATEGORY 55. NAME SLOT 66. FIELD 77. RGB 88. RECORD W/REVIEW
--	---	---

ABOVE ERROR MESSAGE IS DISPLAYED WHENEVER THE MODIFY KEY IS SELECTED AND THERE IS ALREADY DATA ASSOCIATED WITH THE TRACK NUMBER ABOUT TO BE RECORDED OR ANY TRACK BEYOND IT ON THE DISK. IS ALSO SHOWN EVEN IF THE DISPLAY OF OPTIONS HAD BEEN TOGGLED OFF BY THE DISPLAY KEY. MESSAGE DOES NOT TIME OUT. PRESSING SELECT ALLOWS USER TO OVERWRITE EXISTING DATA. PRESSING EXIT TOGGLES THE MODIFY KEY OFF.

#26A

TRAY STATUS (STATUS KEY)

TRAY STATUS

-----TRAY SLOT-----			# IMAGES	
#	NAME	# CAT.	ON DISK	TUS
1	AYON	20	22	
2	BRIGHTON	28	28	
3	CHILI	15	12	ERROR
4	CHRCYIL		0	
→ 5	EAST ROCH	34		ERROR
6	FAIRPORT	29	32	
7	GREECE	18	21	
8	HENRIETTA	17	17	
9	HILTON	32	43	
10			12	
11	IROND.	31	35	
12	MENDON	21	12	ERROR
13				
14	ROCHESTER	45	47	
15	VICTOR	16	16	

NOTE:
ARROW SCROLLS
WITH DISK <>

SCROLL WITH LEFT
OR RIGHT ARROW KEY
IF MEMORY IS
LOCKED WHEN
1,2 OR 3 ARE
SELECTED ERROR
MESSAGE IS
DISPLAYED.

1. DELETE 2. SWAP 3. RENAME 4. DETAIL

PRESSING #1 (DELETE IMAGE DATA)

PRESSING EXIT
OR MENU DURING
THE SCAN PROCESS
WILL ABORT IT.

#26B

TRAY STATUS

-----TRAY SLOT-----			# IMAGES	
#	NAME	# CAT.	ON DISK	TUS
1	AYON	20	22	
2	BRIGHTON	28	28	
3	CHILI	15	12	ERROR
4	CHRCYIL		0	
→ 5	EAST ROCH	34		ERROR
6	FAIRPORT	29	32	
7	GREECE	18	21	
8	HENRIETTA	17	17	
9	HILTON	32	43	
10			12	
11	IROND.	31	35	
12	MENDON	21	12	ERROR
13				
14	ROCHESTER	45	47	
15	VICTOR	16	16	

NOTE:
ARROW SCROLLS
WITH DISK <>
PRESSING SELECT
WILL HIGHLIGHT
SLOT CHOICE

DISK MISSING

PRESS SELECT TO REMOVE IMAGE
DATA FOR TRAY SLOT NUMBER _ 5

NUMBER UPDATES
AS CURSOR SCROLLS

PRESSING EXIT RETURNS TO PREVIOUS SCREEN

#26C

PRESSING SELECT

TRAY STATUS

-----TRAY SLOT-----			# IMAGES ON DISK	STATUS
#	NAME	# CAT.		
1	AVON	20	22	ERROR
2	BRIGHTON	28	28	
3	CHILI	15	12	
4	CHRCVIL		0	
→ 5	EAST ROCH	34		
6	FAIRPORT	18	32	
7	GREECE	17	21	
8	HENRIETTA	32	17	
9	HILTON		43	
10		31	12	
11	IROND.	21	35	ERROR
12	MENDON		12	
13		45		
14	ROCHESTER	16	47	
15	VICTOR		16	

ARE YOU SURE YOU WANT TO
REMOVE DATA FOR THIS SLOT?

YES.....SELECT
NO.....EXIT

PRESSING SELECT

#26D

TRAY STATUS

-----TRAY SLOT-----			# IMAGES ON DISK	STATUS
#	NAME	# CAT.		
1	AVON	20	22	ERROR
2	BRIGHTON	28	28	
3	CHILI	15	12	
4	CHRCVIL		0	
→ 5	EAST ROCH			
6	FAIRPORT	29	32	
7	GREECE	18	21	
8	HENRIETTA	17	17	
9	HILTON	32	43	
10			12	
11	IROND.	31	35	
12	MENDON	21	12	ERROR
13				
14	ROCHESTER	45	47	
15	VICTOR	16	16	

DO YOU WANT TO DELETE THE
SLOT NAME ALSO?

YES.....SELECT
NO.....EXIT

PRESSING EXIT RETURNS TO PREVIOUS MENU

#27

PRESSING #4 OR PRESSING DISK < > WHILE IN TRAY SLOT STATUS BY IMAGE

DISK 9 HILTON

38 HAVE DATES

TRAY SLOT STATUS

PRESS DISK < > TO SCROLL TRAY SLOTS

PRESS IMAGE < > TO SCROLL IMAGES

A-IRAMIS	2
BUNGALOWS	6
CAPIS	11
COLONIALS	18
LOG HOMES	1
MOBILE HOME	3
SOLAR HOMES	1
SPIRITS	24
VACATION HM	

TOTAL # IMAGES ON DISK 43

TRACKS AVAILABLE ON DISK 3

5 IMAGES SET TO SKIP

PRESSING IMAGE < > FROM TRAY SLOT STATUS

#28

DISK 9 HILTON

IMAGE # 3

OCT 8 86

TRAY SLOT STATUS

BY IMAGE

PRESS DISK < > TO SCROLL TRAY SLOTS

PRESS IMAGE < > TO SCROLL IMAGES

A-IRAMIS
BUNGALOWS
CAPIS
COLONIALS
LOG HOMES
MOBILE HOME
SOLAR HOMES
SPIRITS
VACATION HM

RECORDED FRAME

PLAYBACK FIELD

SET TO SKIP

NOTE: INITIAL DEPRESS OF DISK AND IMAGE < > KEYS WILL ACTIVATE FUNCTION AND DISPLAY NEW DATA. HOLD FOR RAPID SCROLL WITHOUT DATA DISPLAY. DATA IS DISPLAYED AFTER KEY IS RELEASED.

PRESSING STATUS KEY AFTER REMOVING TRAY

TRAY STATUS

-----TRAY SLOT-----				
#	NAME	# CAT.	# IMAGES	STATUS
1	AYON	20	22	
2	BRIGHTON	28	28	
3	CHILI	15	12	ERROR
4	CHRCYIL		0	
5				
6	FAIRPORT	29	32	
7	GREECE	18	21	
8	HENRIETTA	17	17	
9	HILTON	32	43	
10			12	
11	IROND.	31	35	
12	MENDON	21	12	ERROR
13	HONEOYE	13	17	
14	ROCHESTER	45	47	
15	VICTOR	16	16	

ARROW KEYS WILL SCROLL ABOVE DISPLAY SO THAT ALL DISK SLOTS CAN BE DISPLAYED.

#26E

PRESSING #2 (SWAP IMAGE DATA)

TRAY STATUS

-----TRAY SLOT-----			# IMAGES	STATUS
#	NAME	# CAT.	ON DISK	
1	AYON	20	22	ERROR
2	BRIGHTON	28	28	
3	CHILI	15	12	
4	CHRCYIL		0	
5				
6	FAIRPORT	29	32	
7	GREECE	18	21	
8	HENRIETTA	17	17	
9	HILTON	32	43	
10			12	
11	IROND.	31	35	
12	MENDON	21	12	ERROR
13				
14	ROCHESTER	45	47	
15	VICTOR	16	16	

NOTE:
ARROW SCROLLS
WITH DISK <>

TO SWAP DATA FOR SLOT 13 PRESS SELECT

#26F

PRESSING SELECT

NUMBER UPDATES
AS CURSOR SCROLLS

TRAY STATUS

-----TRAY SLOT-----			# IMAGES	STATUS
#	NAME	# CAT.	ON DISK	
2	BRIGHTON	28	28	ERROR
3	CHILI	15	12	
4	CHRCYIL		0	
5				
6	FAIRPORT	29	32	
7	GREECE	18	21	
8	HENRIETTA	17	17	
9	HILTON	32	43	
10			12	
11	IROND.	31	35	
12	MENDON	21	12	ERROR
13				
14	ROCHESTER	45	47	
15	VICTOR	16	16	
16	HONEOYE	13	17	

NOTE:
ARROW SCROLLS
WITH DISK < >.
PRESSING SELECT
HIGHLIGHTS SLOT

 SWAP DATA FOR SLOT 13
WITH DATA FOR SLOT 16

 YES.....SELECT
NO.....EXIT

VIDEOFILE PHASE II

VIDEOFILE PHASE II CONSIDERATIONS

THESE ARE SOME OF THE ISSUES RAISED AT THE LAST MEETING OF THE VIDEOFILE SOFTWARE TIGER TEAM IN RESPONSE TO THE PHASE II PROPOSAL.

FRAMESTORE

A FRAMESTORE PROVIDES SMOOTH TRANSITIONS FROM IMAGE TO IMAGE AS WELL AS MAKING SPECIAL EFFECT TRANSITIONS POSSIBLE. ONE IMAGE IS LOADED INTO THE FRAMESTORE WHILE THE UF ACCESSES THE NEXT.

BUILT-IN?

ADD ON?

SELECTIVE ERASE

THE ADDITION OF A SELECTIVE ERASE CAPABILITY WILL HAVE A MAJOR IMPACT ON THE CURRENT SOFTWARE IMPLEMENTATION. SELECTIVE ERASE WOULD ALLOW TRACKS TO BE DELETED OR INSERTED INTO AN EXISTING SUF IN ANY ORDER.

SOUND RECORDING

THE SUF STANDARD PROVIDES FOR THE RECORDING OF SOUND DATA ON THE STILL VIDEO FLOPPY. EITHER 5, 10 OR 15 SECONDS OF MONAURAL SOUND CAN BE RECORDED PER TRACK WITH A FREQUENCY RESPONSE OF 10, 5, OR 2.5KHz RESPECTIVELY.

BUILT-IN?

ADD ON?

PERSONALITY MODULES

THESE PREPROGRAMMED EEPROMS WOULD OFFER CUSTOMIZED STAND-ALONE OPERATING SYSTEMS THAT ARE TAILORED TO A SPECIFIC APPLICATION OR USER.

ALBUMING

DATA BASE

AUDIO-VISUAL

BURIED SUBCARRIER

NEED OPTION TO SHOW BURIED SUBCARRIER DATA OR RECORD SUBCARRIER DATA IN RECORDER.

DATE/TIME (INTERNAL CLOCK)

AN INTERNAL CLOCK WOULD PROVIDE A MEANS TO RECORD THE TIME AND DATE OF RECORDING USING THE BURIED SUBCARRIER DATA.

MULTIDISK RECORDER STAND-ALONE OPERATING SYSTEM OVERVIEW

